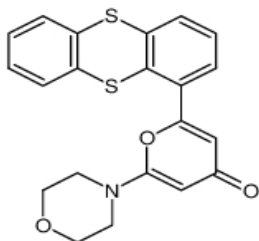


KU-55933 (CAS: 587871-26-9)**Catalog #: EBC51008****Biological Activity**

Synonyms	ATM Kinase Inhibitor
Chemical Name	2-(4-Morpholinyl)-6-(1-thianthrenyl)-4H-pyran-4-one
Application	ATM Kinase Inhibitor is a cell-permeable, potent, selective and ATP-competitive ATM inhibitor
CAS No.	587871-26-9
Purity	≥99.0%
Molecular Weight	395.49
Molecular Formula	C ₂₁ H ₁₇ NO ₃ S ₂
Shipping	Gel Pack
Storage	Store at -20° C
Target & IC₅₀	Atm: IC ₅₀ = 13 nM mTOR: IC ₅₀ = 9.3 μM PI3K: IC ₅₀ = 16.6 μM

Molecular Structure**Solubility**

DMSO: 39.6 mg/mL (100 mM)

Methanol: 19.8 mg/mL (50 mM)

PS: < 1 mg/ml refers to the product insoluble**Description**

ATM Kinase Inhibitor (KU 55933) is a cell-permeable, potent, selective and ATP-competitive inhibitor of ATM (Ataxia telangiectasia mutated), a serine/threonine protein kinase, that exhibits an IC₅₀ of 13 nmol/L and a K_i of 2.2 nmol/L. ATM is rapidly and specifically activated in response to DNA double-strand breaks in eukaryotic cells and signals to cell cycle and DNA repair components by phosphorylating downstream targets such as p53, CHK2, NALP2 (NBS1), and BRCA1.

For Research Use Only. Not For Use In Diagnostic Procedures**EbioCell Lifesciences, Inc.**Imperial Business Park 4819 Emperor Boulevard,
Suite 408 Durham, NC 27703, USA**Order:**order@ebiocell.com**Supprt:**

TEL: (540)808-3925

tech@ebiocell.com